



# AP-48SD

Standard Duty Goniophotometer

## Automated Photometer System

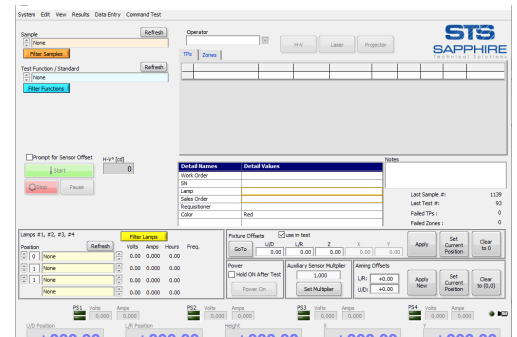
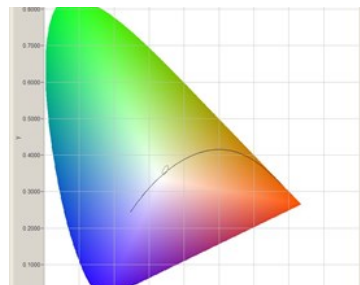
The AP-48SD is a standard duty automated photometric testing machine capable of positioning a 48-inch lamp and testing fixture. The system accurately measures (SAE, ECE, F(C)MVSS108, FAA and ICAO regulations).

### COMMITTED TO INNOVATION

AS A GLOBAL LEADER IN OUR FIELD, WE OFFER A VARIETY OF COST-EFFECTIVE, SCALABLE SOLUTIONS FOR PHOTOMETRIC AND ENVIRONMENTAL TESTING ACROSS A RANGE OF COMMERCIAL LIGHT TESTING INDUSTRIES. WE STRIVE TO BE AN INDUSTRY VOICE FOR MODERNIZATION AND IMPROVED STANDARDIZATION.

### CERTIFICATIONS & MEMBERSHIPS

- IEC/ISO-17025 Certified
- GTB Delegate - Automotive Lighting & Light Signaling Expert Group (EU)
- SAE Automotive Lighting Committee
- SAE Aerospace G20 & A20 Committee
- SPIE - International Society of Optical Engineering
- IEEE - Institute for Electrical & Electronics Engineers
- IESNA - Illuminating Engineering Society of North America
- ANSI - FL1 - Flashlight Standards Committee



**TIMELY REPORTING**  
 CUSTOMIZED REPORTS  
 AVAILABLE IN MULTIPLE  
 FORMATS.

**UP-TO-DATE SOFTWARE**  
 RUN WITH PHOTOSCALE, OUR  
 PROPRIETARY SOFTWARE, THE  
 OPERATING SYSTEM IS ALWAYS  
 UP-TO-DATE.

ISO 17025 ACCREDITED TESTING LAB

A GLOBAL LEADER  
 IN LIGHT MEASUREMENT TECHNOLOGIES.



We design and manufacture **highly customized** photometric testing equipment and **software** for our customers.

- GONIOPHOTOMETERS
- PHOTOMETERS
- CAMERA-BASED PHOTOMETRY
- SPECTORADIOMETERS
- VIBRATION TEST MACHINES
- INTEGRATING SPHERE
- CUSTOM EQUIPMENT
- SOFTWARE

ISO 17025 ACCREDITED TESTING LAB

## SOFTWARE CAPABILITIES



- Beam distributions and bird's eye plots for beam pattern analysis
- Ability to create custom testing requirements
- Networking and Data Storage using .html and .pdf formats for simple file retrieval and sharing
- Touch screen user interface powered by Windows 10 Professional computer with network capabilities for data backup and transfer purposes
- High-Speed scanning at steady state and PWM sources (30°/second)

## MEASUREMENT CAPABILITIES

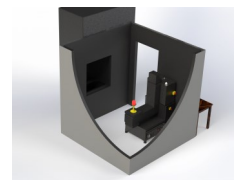


- SAE, UNECE, FMVSS108, TSD108 Canada, and other automotive exterior lighting regulations
- High-Speed Beam Distribution capture for use in IIHS, GTB, Headlamp rating protocol analysis
- Forward lighting, signal lighting, retro-reflex, and other custom testing
- FAA and ICAO aerospace and airport lighting regulations

## SPECIFICATIONS



- Photometric Range: 0.01 to 2,000,000 cd, photo-detectors with internally digitized sensors
- White Uncertainty <1%, Red <3%, Amber <2%. Intensity Linearity Error <2%
- Positional Accuracy: 0.005 degree resolution / 0.01 degree repeatability
- Horizontal (L/R) Travel: -180 to 180 degrees
- Vertical (U/D) Travel: -90 to 110 degrees
- Center Height Travel: 0 to 20 inches. Maximum Load: 75kg (165lbs)
- Maximum Rotational Clearance: 60 inch diameter
- Optional automated fixture (XY) positioning for higher throughput and increased accuracy without operator intervention
- Bar Code reader option
- Compact Size: 74" W x 36" Deep x 78" H
- ISO/IEC 17025 Accredited Calibration Transfer Standards
- Optional Modular Room and Vertical Tunnel



A GLOBAL LEADER  
 IN LIGHT MEASUREMENT TECHNOLOGIES.