

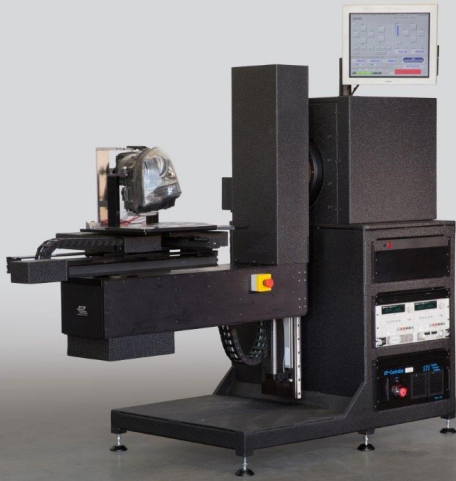


AP-60HD

Heavy Duty Goniophotometer

Automated Photometer System

The AP-60HD is the main component of an automated photometer system. It is a heavy duty automated machine capable of positioning a 60 inch lamp and testing fixture. It is used for automatic location of fixture positioning for multi-cavity lamp assembly testing without user intervention, allowing for higher testing throughput and less chance for operator error in fixture positioning.

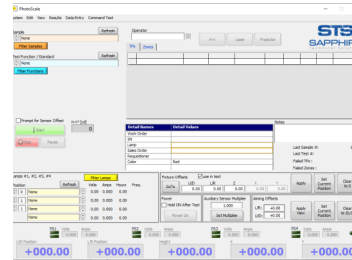


COMMITTED TO INNOVATION

AS A GLOBAL LEADER IN OUR FIELD, WE OFFER A VARIETY OF COST-EFFECTIVE, SCALABLE SOLUTIONS FOR PHOTOMETRIC AND ENVIRONMENTAL TESTING ACROSS A RANGE OF COMMERCIAL LIGHT TESTING INDUSTRIES. WE STRIVE TO BE AN INDUSTRY VOICE FOR MODERNIZATION AND IMPROVED STANDARDIZATION.

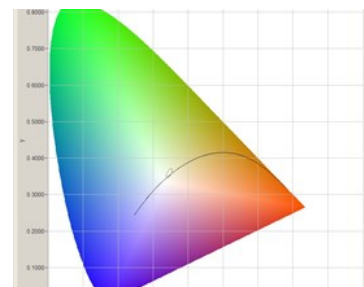
CERTIFICATIONS & MEMBERSHIPS

- IEC/ISO-17025 Certified
- GTB Delegate - Automotive Lighting & Light Signaling Expert Group (EU)
- SAE Automotive Lighting Committee
- SAE Aerospace G20 & A20 Committee
- SPIE - International Society of Optical Engineering
- IEEE - Institute for Electrical & Electronics Engineers
- IESNA - Illuminating Engineering Society of North America
- ANSI - FL1 - Flashlight Standards Committee



UP-TO-DATE SOFTWARE

RUN WITH PHOTOSCALE, OUR PROPRIETARY SOFTWARE, THE OPERATING SYSTEM IS ALWAYS UP-TO-DATE.



TIMELY REPORTING

CUSTOMIZED REPORTS AVAILABLE IN MULTIPLE FORMATS.



We design and manufacture **highly customized** photometric testing equipment and **software** for our customers.

- GONIOPHOTOMETERS
- PHOTOMETERS
- CAMERA-BASED PHOTOMETRY
- SPECTORADIOMETERS
- VIBRATION TEST MACHINES
- INTEGRATING SPHERE
- CUSTOM EQUIPMENT
- SOFTWARE

ISO 17025 ACCREDITED TESTING LAB

SOFTWARE CAPABILITIES



- Beam distributions and bird's eye plots for beam pattern analysis
- Ability to create custom testing requirements
- Networking and Data Storage using .html and .pdf formats for simple file retrieval and sharing
- Touch screen user interface powered by Windows 10 Professional computer with network capabilities for data backup and transfer purposes
- High-Speed scanning at steady state and PWM sources (30°/second)

MEASUREMENT CAPABILITIES



- SAE, UNECE, FMVSS108, TSD108 Canada), and other automotive exterior lighting regulations
- High-Speed Beam Distribution capture for use in IIHS, GTB, Headlamp rating protocol analysis
- Forward lighting, signal lighting, retro-reflex, and other custom testing
- FAA and ICAO aerospace and airport lighting regulations

SPECIFICATIONS



- Photometric Range: 0.01 to 2,000,000 cd, photo-detectors with internally digitized sensors
- White Uncertainty <1%, Red <3%, Amber <2%. Intensity Linearity Error <2%
- Positional Accuracy: 0.005 degree resolution / 0.01 degree repeatability
- Horizontal (L/R) Travel: -180 to 180 degrees
- Vertical (U/D) Travel: -90 to 110 degrees
- Center Height Travel: 0 to 20 inches.
Maximum Load: 75kg (165lbs)
- Maximum Rotational Clearance: 60 inch diameter
- Optional automated fixture (XY) positioning for higher throughput and increased accuracy without operator intervention
- Bar Code reader option
- Compact Size: 74" W x 36" Deep x 78" H
- ISO/IEC 17025 Accredited Calibration Transfer Standards



A GLOBAL LEADER
 IN LIGHT MEASUREMENT TECHNOLOGIES.